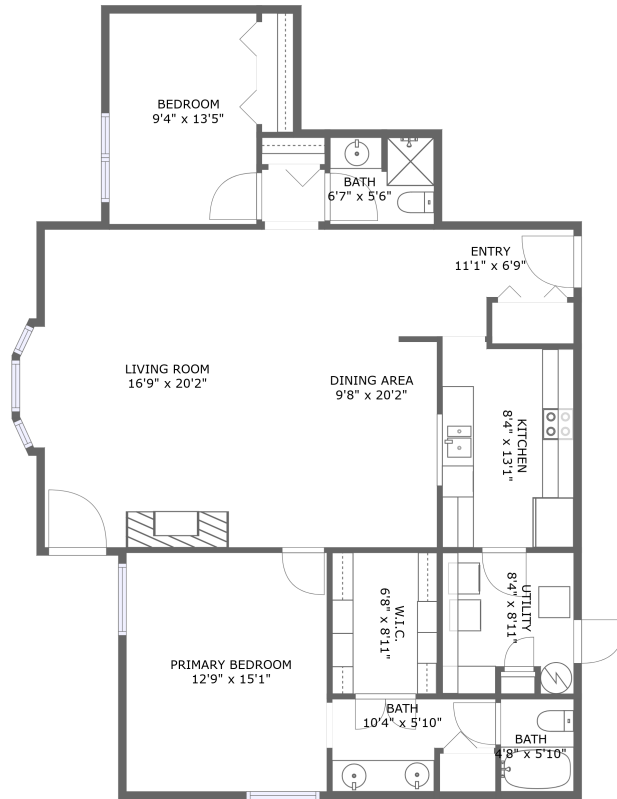


3181 Charlevoix Drive Southeast, Cascade Charter Township, Grand Rapids, Kent County,




FLOOR 1

Property Summary

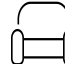
 **0** garages

 **2** bedrooms

 **2** bathrooms

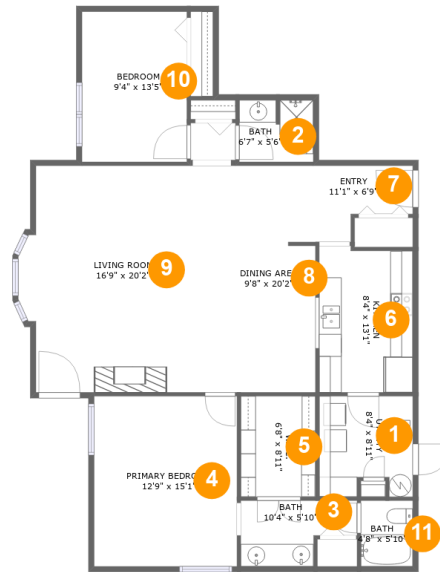
 **0** half baths

 **1** floors

 **1,341** Gross Living Area sqft

 **1,341** total sqft

3181 Charlevoix Drive Southeast, Cascade Charter Township, Grand Rapids, Kent County,



Room Dimensions

Floor 1

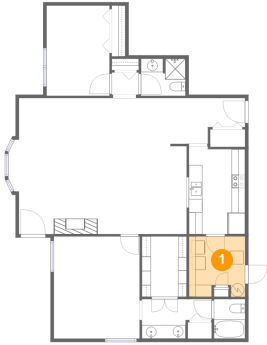
Total sqft: 1341

Living area: 1341

#	Room name	Dimensions	Area (sqft)	Counted as Living Area
1	Utility	8'4" x 8'11"	70 sq. ft	Yes
2	Bath	6'7" x 5'6"	36 sq. ft	Yes
3	Bath	10'4" x 5'10"	50 sq. ft	Yes
4	Primary Bedroom	12'9" x 15'1"	193 sq. ft	Yes
5	W.i.c.	6'8" x 8'11"	60 sq. ft	Yes
6	Kitchen	8'4" x 13'1"	108 sq. ft	Yes
7	Entry	11'1" x 6'9"	62 sq. ft	Yes
8	Dining Area	9'8" x 20'2"	178 sq. ft	Yes
9	Living Room	16'9" x 20'2"	317 sq. ft	Yes
10	Bedroom	9'4" x 13'5"	125 sq. ft	Yes
11	Bath	4'8" x 5'10"	27 sq. ft	Yes

3181 Charlevoix Drive Southeast, Cascade Charter Township, Grand Rapids, Kent County,

1 Floor 1 - Utility



Dimensions: 8'4" x 8'11"
Area: 70 sq. ft
Counted as Living Area:
Yes

Heated: Yes
Finished: Yes
Enclosed: Yes
Contiguous:
Yes
Permitted: Yes
Wet Space: No
Addition: No
Conversion: No

2 Floor 1 - Bath

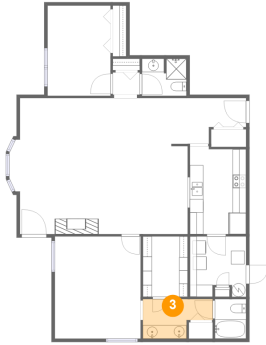


Dimensions: 6'7" x 5'6"
Area: 36 sq. ft
Counted as Living Area:
Yes

Heated: Yes
Finished: Yes
Enclosed: Yes
Contiguous:
Yes
Permitted: Yes
Wet Space: Yes
Addition: No
Conversion: No

3181 Charlevoix Drive Southeast, Cascade Charter Township, Grand Rapids, Kent County,

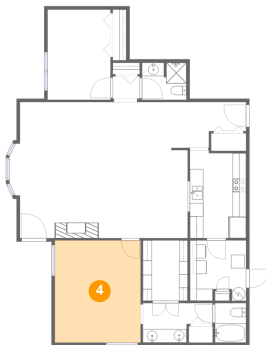
3 Floor 1 - Bath



Dimensions: 10'4" x 5'10"
Area: 50 sq. ft
Counted as Living Area:
Yes

Heated: Yes
Finished: Yes
Enclosed: Yes
Contiguous:
Yes
Permitted: Yes
Wet Space: Yes
Addition: No
Conversion: No

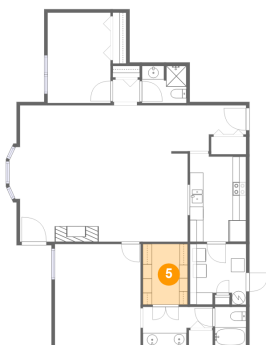
4 Floor 1 - Primary Bedroom



Dimensions: 12'9" x 15'1"
Area: 193 sq. ft
Counted as Living Area:
Yes

Heated: Yes
Finished: Yes
Enclosed: Yes
Contiguous:
Yes
Permitted: Yes
Wet Space: No
Addition: No
Conversion: No

5 Floor 1 - W.i.c.

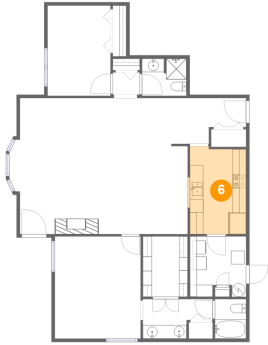


Dimensions: 6'8" x 8'11"
Area: 60 sq. ft
Counted as Living Area:
Yes

Heated: Yes
Finished: Yes
Enclosed: Yes
Contiguous:
Yes
Permitted: Yes
Wet Space: No
Addition: No
Conversion: No

3181 Charlevoix Drive Southeast, Cascade Charter Township, Grand Rapids, Kent County,

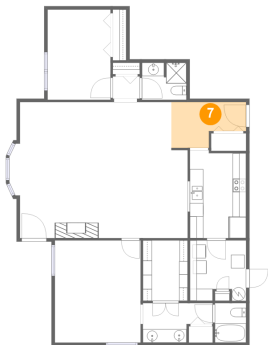
6 Floor 1 - Kitchen



Dimensions: 8'4" x 13'1"
Area: 108 sq. ft
Counted as Living Area:
Yes

Heated: Yes
Finished: Yes
Enclosed: Yes
Contiguous:
Yes
Permitted: Yes
Wet Space: No
Addition: No
Conversion: No

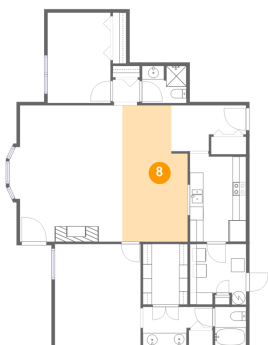
7 Floor 1 - Entry



Dimensions: 11'1" x 6'9"
Area: 62 sq. ft
Counted as Living Area:
Yes

Heated: Yes
Finished: Yes
Enclosed: Yes
Contiguous:
Yes
Permitted: Yes
Wet Space: No
Addition: No
Conversion: No

8 Floor 1 - Dining Area

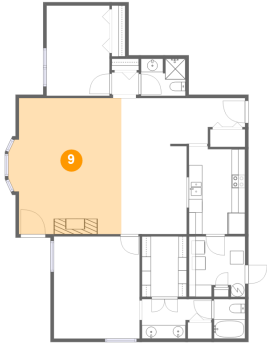


Dimensions: 9'8" x 20'2"
Area: 178 sq. ft
Counted as Living Area:
Yes

Heated: Yes
Finished: Yes
Enclosed: Yes
Contiguous:
Yes
Permitted: Yes
Wet Space: No
Addition: No
Conversion: No

3181 Charlevoix Drive Southeast, Cascade Charter Township, Grand Rapids, Kent County,

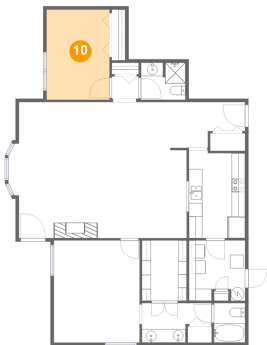
9 Floor 1 - Living Room



Dimensions: 16'9" x 20'2"
Area: 317 sq. ft
Counted as Living Area:
Yes

Heated: Yes
Finished: Yes
Enclosed: Yes
Contiguous:
Yes
Permitted: Yes
Wet Space: No
Addition: No
Conversion: No

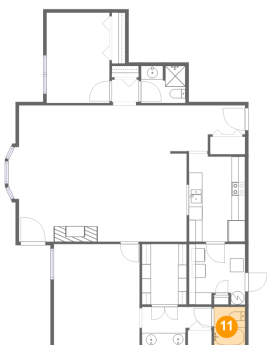
10 Floor 1 - Bedroom



Dimensions: 9'4" x 13'5"
Area: 125 sq. ft
Counted as Living Area:
Yes

Heated: Yes
Finished: Yes
Enclosed: Yes
Contiguous:
Yes
Permitted: Yes
Wet Space: No
Addition: No
Conversion: No

11 Floor 1 - Bath



Dimensions: 4'8" x 5'10"
Area: 27 sq. ft
Counted as Living Area:
Yes

Heated: Yes
Finished: Yes
Enclosed: Yes
Contiguous:
Yes
Permitted: Yes
Wet Space: Yes
Addition: No
Conversion: No